



IO-M OWNER'S GUIDE

MOVING COIL PHONO CARTRIDGE



IO-M OWNER'S GUIDE

MOVING COIL PHONO CARTRIDGE

Instructions for installation and use.

Thank you for selecting the Kondo IO-M moving coil phono cartridge. In order to achieve the full performance level this cartridge is capable of, please read this manual carefully before proceeding with the installation.



This product's packaging materials are recyclable and can be reused.
This product and the accessories packed together are applicable to the WEEE directive.

Instructions for installation and use.

Thank you for selecting the Kondo IO-M moving coil phono cartridge. In order to achieve the full performance level this cartridge is capable of, please read this manual carefully before proceeding with the installation.



This product's packaging materials are recyclable and can be reused.
This product and the accessories packed together are applicable to the WEEE directive.

Features

1. From the coil windings to the output pins, only a pure silver path is used. The coil windings are made from silver that has been age annealed for ten years to provide mellowness for total music enjoyment.
2. The magnetic circuit. The IO-M uses a high performance Al-NiCo magnet. The thick yoke is made from a soft iron with of very low carbon content. The iron is milled into the precise shape, rather than pressing in order to prevent damage to the materials crystal structure. After milling, the yoke is annealed to further assist in creating a smoothly controlled magnetic path.

Features

1. From the coil windings to the output pins, only a pure silver path is used. The coil windings are made from silver that has been age annealed for ten years to provide mellowness for total music enjoyment.
2. The magnetic circuit. The IO-M uses a high performance Al-NiCo magnet. The thick yoke is made from a soft iron with of very low carbon content. The iron is milled into the precise shape, rather than pressing in order to prevent damage to the materials crystal structure. After milling, the yoke is annealed to further assist in creating a smoothly controlled magnetic path.

Installing the IO-M

The IO-M is a very delicate instrument and therefore requires great care when installing. This is most particular for the fragile cantilever. Do not touch the cantilever!

Also take precautions when using a screw driver near the cartridge as the high power magnets may deflect the screw driver and thereby damage the cantilever or cartridge body.

■ Mounting to the headshell

The cartridge must be mounted such that the body of the cartridge is parallel to the headshell and the cartridge body rests flatly on the headshell. Slide the cartridge along the headshell so that the stylus position corresponds to the overhang measurements recommended by the tonearm maker.

Installing the IO-M

The IO-M is a very delicate instrument and therefore requires great care when installing. This is most particular for the fragile cantilever. Do not touch the cantilever!

Also take precautions when using a screw driver near the cartridge as the high power magnets may deflect the screw driver and thereby damage the cantilever or cartridge body.

■ Mounting to the headshell

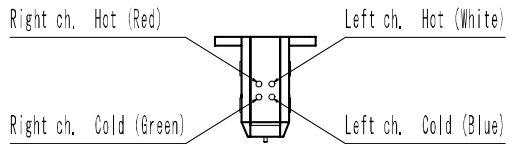
The cartridge must be mounted such that the body of the cartridge is parallel to the headshell and the cartridge body rests flatly on the headshell. Slide the cartridge along the headshell so that the stylus position corresponds to the overhang measurements recommended by the tonearm maker.

■ Output pin layout

The IO-M's output pins are color coded as per the standard for phono cartridges.

Connect the fly leads from the headshell or tonearm to the pins as per the color code. Be sure to use the standard female connectors on the pins.

Do not attempt to solder wires onto the IO-M's pins as this will permanently damage the IO-M.



■ Stylus pressure

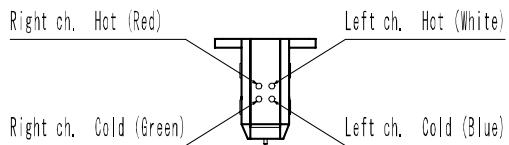
Adjust your tonearm to provide a stylus pressure of 2.0 ± 0.2 grams.

■ Output pin layout

The IO-M's output pins are color coded as per the standard for phono cartridges.

Connect the fly leads from the headshell or tonearm to the pins as per the color code. Be sure to use the standard female connectors on the pins.

Do not attempt to solder wires onto the IO-M's pins as this will permanently damage the IO-M.



■ Stylus pressure

Adjust your tonearm to provide a stylus pressure of 2.0 ± 0.2 grams.

Stylus cleaning

Please use the ZERO DUST stylus cleaner we have provided in the accessory pack.

Due to the extreme fragileness of the cantilever, always be careful when cleaning the stylus.

Ensure the platter has stopped rotating, place the ZERO DUST cleaner on the turntables platter and lift the arm into the up position. Place the stylus above the ZERO DUST cleaner and lower the arm such that the stylus rests on the ZERO DUST's soft cleaning pad. Lift the arm and your stylus is clean!

■ Other Notes

We recommend that you do not use alcohol or solvent based cleaning products on the IO-M as these substances may damage the cartridge.

Stylus cleaning

Please use the ZERO DUST stylus cleaner we have provided in the accessory pack.

Due to the extreme fragileness of the cantilever, always be careful when cleaning the stylus.

Ensure the platter has stopped rotating, place the ZERO DUST cleaner on the turntables platter and lift the arm into the up position. Place the stylus above the ZERO DUST cleaner and lower the arm such that the stylus rests on the ZERO DUST's soft cleaning pad. Lift the arm and your stylus is clean!

■ Other Notes

We recommend that you do not use alcohol or solvent based cleaning products on the IO-M as these substances may damage the cartridge.

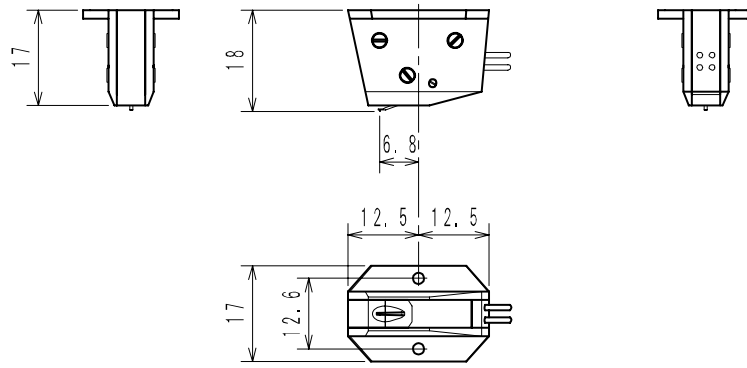
Specifications

Cartridge type:	Moving Coil
Output voltage:	0.12mV (1KHz, 5cm per second)
Channel balance:	within 1dB at 1KHz
Channel separation:	greater than 25dB at 1KHz
Source impedance:	1 Ohm
Compliance:	6.0×10^{-6} cm/Dyne
Tracking pressure:	2.0 ± 0.2 g
Weight:	11g

Specifications

Cartridge type:	Moving Coil
Output voltage:	0.12mV (1KHz, 5cm per second)
Channel balance:	within 1dB at 1KHz
Channel separation:	greater than 25dB at 1KHz
Source impedance:	1 Ohm
Compliance:	6.0×10^{-6} cm/Dyne
Tracking pressure:	2.0 ± 0.2 g
Weight:	11g

Dimensional outline

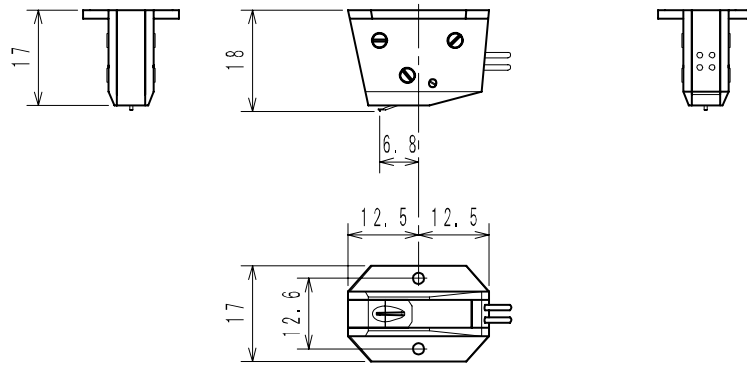


AUDIO NOTE CO., LTD

1-9-2 Koyama Shinagawa-ku, Tokyo 142-0062, JAPAN

www.audionote.co.jp

Dimensional outline



AUDIO NOTE CO., LTD

1-9-2 Koyama Shinagawa-ku, Tokyo 142-0062, JAPAN

www.audionote.co.jp